



AccountMate Software That Fits

The System Manager module is the control center for the entire AccountMate system, and must be installed in order to run any of the AccountMate modules.

This module controls the system environment and setup, desktop shortcuts to AccountMate functions and external applications, on-line help, multi-level password security, printer setup, module and company selection, system date and all pop-up menus. It also initializes the system, provides easy access to Microsoft Office tools and has multi-lingual capability.

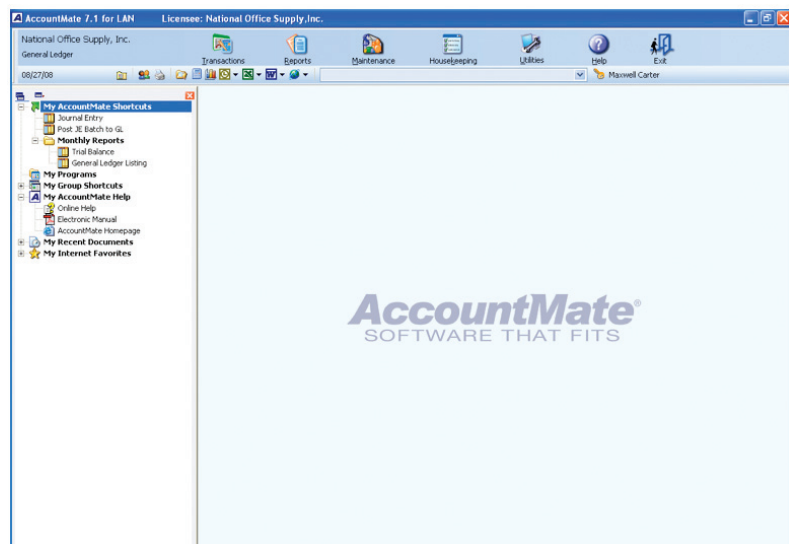
AccountMate System Manager boasts a modern-looking interface as well as a user-definable shortcut pane and a power toolbar that delivers enhanced efficiency, productivity and security to any business.

AccountMate 7 for LAN System Manager Module

Support Password Complexity

AccountMate supports the comprehensive password policies recommended by many banks and accountants for Sarbanes-Oxley compliance. Users can define parameters for password structure and expiration, set login by day and time, track history of invalid logon attempts and take advantage of any of the following options:

- Disallow changing of certain user passwords
- Require password change during next login
- Disallow re-use of old passwords
- Disallow multiple logins per user account



User Interface

Define Multiple Levels of Security Down to Individual Fields

Security is vital to every company. The System Manager module delivers multiple levels of password-based security. Set user access by company, by module, by function and all the way down to key data fields. Additional security can be set to include global functions such as user setup, custom reports and data export. To speed up the assignment of user access rights, AccountMate provides the ability to copy user and group rights settings. To facilitate the setup, users can view or print reports about function and extended security settings by group, user or function.

Transaction Rollback Gives Additional Data Protection

This fundamental feature guarantees data integrity by ensuring that – if a power failure occurs while a transaction is in process - the likelihood of having incomplete entries or corrupted files is kept to the absolute minimum. This crucial safety feature offers significant data integrity benefits.

User-Defined Shortcut Pane

With the Shortcut Pane, users can add folders, AccountMate function shortcuts, and program shortcuts right on the AccountMate desktop. They can also view 'Recent documents' and 'Favorites'. AccountMate allows users to organize the shortcut pane in the manner desired, collapse and expand the tree as needed and save the last setting for future use. Best of all, these settings are associated with each user ensuring that the shortcuts are available regardless of which workstation runs AccountMate. This eliminates the need to search for a program or shortcut on the Windows program folders and desktop since the AccountMate desktop addresses that requirement.

Integration with Microsoft Office

AccountMate's Power Toolbar includes buttons to access Microsoft Word, Excel, Outlook and the Internet, which when clicked will automatically open the corresponding application. This link to the most commonly used Microsoft programs provides easy access to the said applications saving time and increasing productivity. Moreover, users can export to Microsoft Excel from any grid.

New Executive Summary

An Executive Summary is now accessible from the Power Toolbar. This screen provides a snap shot of the company's current financial condition to help managers quickly identify potential areas of concern.

Productivity Tools

AccountMate allows the attachment of files to each transaction or maintenance record to serve as supporting documents or references that can be retrieved, updated or purged at any time. It also allows for the grid column order and width settings to be defined and saved for each user. By doing a right-mouse click on any grid, users can access a pop-up menu where they can see options such as cut, copy, paste and others. They can also use function keys and/or hot keys to navigate the screen without a mouse to facilitate data entry.

Powerful Lookup Feature

The lookup feature provides a Search window where users can select the fields to be displayed, export the data in the grid to Excel and save the Lookup settings as a macro. User-specific extended security settings are required to export data from the Search grid.

Perform Multiple Functions without Closing the Current Function

Users can access several other functions without closing the current one, even if the functions come from different modules. For example, while entering a sale a user can drill down to a customer or inventory file to set up a new customer or inventory record (subject only to the limitations of the user's access rights). This speeds up data entry. For added convenience, a list of open windows is available in the task list on the Power Toolbar. Users can also display the windows in tile order to view multiple windows at the same time.

Error Reporting

An Error Report window is provided which displays pertinent information each time an application error occurs. This feature allows users to view a description of the issue and send a report containing the details of the error to the AccountMate Solution Provider, AccountMate Product Support or any designated recipient who can help troubleshoot the problem. Since the e-mail that will be sent is generated by the system and the error message is captured verbatim, the likelihood that wrong information will be communicated to the parties concerned is considerably reduced.

On-line Help Always Available

At every level of operation, the System Manager provides user-friendly Help screens that allow the search for topics related to any AccountMate module, function or feature regardless of the module currently being accessed.

Electronic Manual

The AccountMate User Manual in electronic form is available for all users whenever it is needed. An Electronic Manual menu option is accessible from the My AccountMate Help group in the Shortcut Pane; which when clicked will present the user with the manual's Table of Contents.

Hassle-Free Module Activation

Activating the various modules is as easy as 1-2-3. Simply enter the product key provided and the system will automatically activate all the modules purchased.

Store Data Forever

Data can be maintained for an infinite number of years, limited

only by the available disk space and memory. Users can quickly generate reports for any period of any year, instead of having to search through archived data. Users also have the option to purge historical data during period-end closing.

Current User Login List

AccountMate can provide a list of all users who are currently logged in to the system. When a user needs to perform a function requiring exclusive access to the system (such as period-end closing or back up of data), this information indicates those who need to exit AccountMate.

Table Browser and Exporter

AccountMate provides the ability to browse and export an entire data file. Password protection is available to prevent unauthorized users from viewing or exporting sensitive information.

Report Macros Set Report Criteria

With the System Manager's report macros, users can define their own report criteria allowing them to generate reports without

having to manually re-select the criteria each time.

Print Batches and Labels the Easy Way

A Print-Batch feature enables users to set up batches of reports in convenient groups for periodic printing. Set up batches of reports to be printed weekly, at period-end or at year-end. The Print-Label feature supports the printing of labels for customers, vendors, inventory items and other records.

Other Features

- User-defined menu display settings
- Support up to 999 companies, each with its own chart of accounts
- Ability to install/reinstall sample company data to be used in training new users
- All product components (including source code, if applicable) are included in a single media

AccountMate Software Corporation

1445 Technology Lane | Suite A5 | Petaluma, California 94954 | USA
800-877-8896 | 707-774-7500 | www.accountmate.com

Software That Fits